

Biopad vs Promogram Diabetic Foot Ulcer comparison

This 57-year-old male presented with bilateral lateral Diabetic foot ulcers of 26-day duration, insidious in onset. Wound care to date consisted of topical triple antibiotic suave and Band-Aid. This patient did not check his blood sugar routinely. His past medical history was significant for Type II Diabetes, hypertension, coronary artery disease with history of a MI, and lower extremity periph artery disease. The patient had quit smoking after a 15 pack year smoking history.

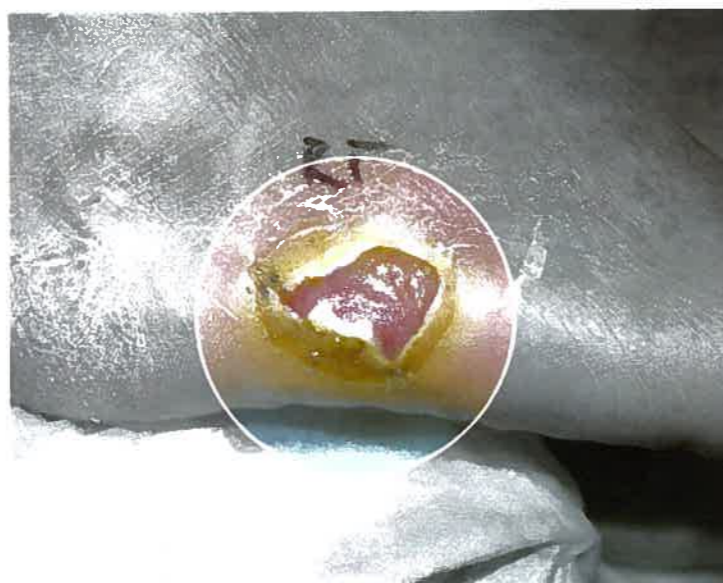
Initial ulcer measurements were 3.0 by 4.0 by 0.3 centimeters right and 3.0 by 3.0 by 0.3 centimeters left. Initial wound care consisted of weekly sharp debridement with daily dressing changes consisting of Gentamycin ointment and dry dressing. Bilateral foot radiographs were negative for bone infection and arterial non-invasive vascular studies were negative for significant lower extremity arterial disease. There was equal off loading between lower extremities.

After approximately four weeks of treatment there was little improvement in the ulcers. Ulcer measurements were 2.5 by 4.0 by 0.3 centimeters right and 3.0 by 2.5 by 0.3 centimeters left. After informed consent was obtained from the patient, daily application of a the collagen dressing BioPad™ was initiated with a normal saline damp gauze, then dry gauze dressing to the right Diabetic foot ulcer. BioPad™ is a 100% type I native heterologous collagen dressing extracted from horse flexor tendons. Promogram™ was applied to the left foot with the same technique.

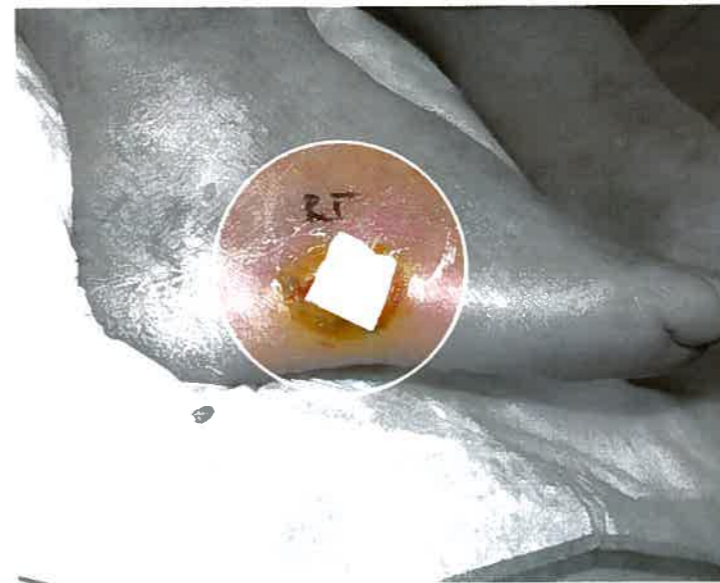
After 41 days there was complete healing of the right diabetic foot ulcer. The left Diabetic foot remained open and measured 1.0 by 1.0 by 0.3 centimeters at the time the right foot ulcer healed.

In this comparison between the collagen dressings BioPad™ and Promogram™ there was faster complete healing in the right foot Diabetic foot ulcer treated with BioPad™. This was in light of this ulcer being larger at the time of comparison treatment. It should be noted that the ulcers were located on the same side and area of the feet, had similar findings i.e. no bone infection/involvement and similar arterial vascular supply.

BIOPAD



Right Diabetic foot ulcer, baseline

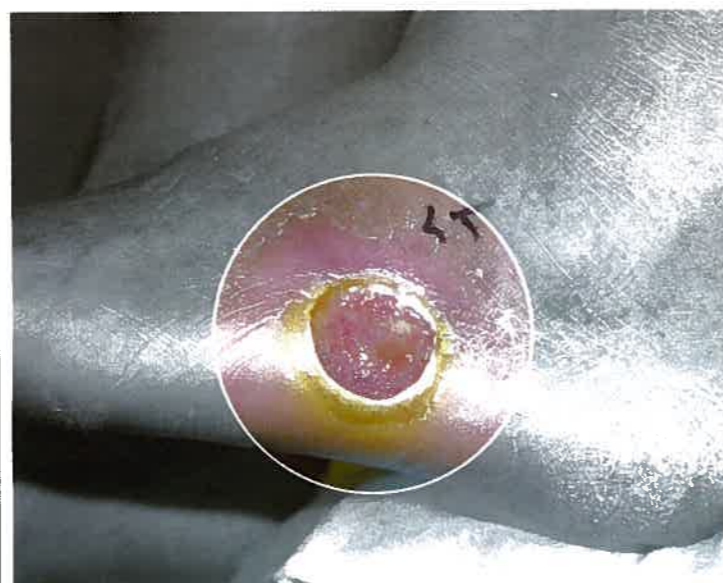


Right Diabetic foot BioPad application



Healed right Diabetic foot Diabetic ulcer

PROMOGRAM



Left Diabetic foot ulcer, baseline



Left Diabetic foot Promogram application



Open left Diabetic foot ulcer